



Government of India
Ministry of Earth Sciences



India Meteorological Department

PRESS RELEASE-2

Time of issue: 1230 hours IST

Dated: 16th October, 2024

Sub: (A) Depression over southwest and adjoining westcentral Bay of Bengal and (B) Well Marked Low Pressure area over coastal Oman

(A) Depression over southwest and adjoining westcentral Bay of Bengal

Yesterday's **Well Marked Low Pressure Area** over the central parts of south Bay of Bengal moved west-northwestwards, intensified into a **Depression** over southwest Bay of Bengal in the same evening (1730 hours IST) of the same day, the 15th October 2024 and lay centered at 0830 hours IST of today, the 16th October 2024 over southwest and adjoining westcentral Bay of Bengal near latitude 12.3° N and longitude 83.0° E, about 320 km east-southeast of Chennai (Tamil Nadu), 350 km east-northeast of Puducherry and 400 km southeast of Nellore (Andhra Pradesh).

It is likely to move west-northwestwards and cross north Tamil Nadu - South Andhra Pradesh coasts between Puducherry and Nellore, close to Chennai during early morning of 17th October.

Forecast track and intensity are given in the following table:

| Date/Time (IST) | Position (Lat. °N/ Long. °E) | Maximum Sustained Surface Wind Speed (Kmph) | Category of Cyclonic Disturbance |
|-----------------|------------------------------|---|----------------------------------|
| 16.10.24/0830 | 12.3/83.0 | 40-50 gusting to 60 | Depression |
| 16.10.24/1730 | 12.7/82.1 | 40-50 gusting to 60 | Depression |
| 17.10.24/0530 | 13.2/80.5 | 35-45 gusting to 55 | Depression |
| 17.10.24/1730 | 13.6/79.0 | 25-35 gusting to 45 | Well Marked Low Pressure Area |

Warnings:

(i) Rainfall Warning:

Tamil Nadu & Puducherry: Light to moderate rainfall over most places with heavy to very heavy rainfall at a few places with extremely heavy rainfall at isolated places is very likely over north Tamil Nadu & Puducherry on 16th October and isolated heavy to very heavy rainfall over north interior Tamil Nadu on 17th October.

Light to moderate rainfall over most places with heavy rainfall at isolated places is very likely over south Tamil Nadu during 16th to 17th October.

South Andhra Pradesh & Rayalaseema: Light to moderate rainfall over most places with heavy to very heavy rainfall at a few places with extremely heavy rainfall at isolated places is likely on 16th October and heavy rainfall at isolated places is likely on 17th October.

Contact: Cyclone Warning Division, Office of the Director General of Meteorology, India Meteorological Department, Ministry of Earth Sciences, E-mail: cyclonewarningdivision@gmail.com, Website: rsmcnewdelhi.imd.gov.in, Spatial rainfall distribution: Isolated: <25%, A few: 26-50%, Many: 51-75%, Most: 76-100%, Rainfall amount (mm): Heavy rain: 64.5 – 115.5, Very heavy rain: 115.6 – 204.4, Extremely heavy rain: 204.5 or more.

Kerala & south Interior Karnataka: Light to moderate rainfall over most places with heavy to very heavy rainfall at isolated places is likely over Kerala and south Interior Karnataka during 16th to 17th October.

(ii) Wind Warning:

Squally wind speed reaching 40-50 kmph gusting 60 kmph is likely to prevail over southwest and adjoining westcentral Bay of Bengal and along & off Tamil Nadu, Puducherry and south Andhra Pradesh coasts till noon of 17th October and decrease gradually thereafter.

(iii) Sea Condition:

Rough to very Rough Sea condition is likely to prevail over southwest & adjoining westcentral Bay of Bengal and along & off Tamil Nadu, Puducherry and south Andhra Pradesh coasts till noon of 17th October and improve gradually thereafter.

(iv) Fishermen Warning:

Fishermen are advised not to venture into

- Southwest and adjoining westcentral Bay of Bengal till 17th October.
- Fishermen out at sea are advised to return to coasts.

(v) Flash Flood Guidance:

24 hours Outlook for the Flash Flood Risk (FFR) till 0530 IST of 17-10-2024:

Moderate flash flood risk likely over few watersheds & neighbourhoods of following Met Sub-divisions during next 24 hours

Coastal Andhra Pradesh & Yanam - Guntur, Prakasam and Nellore districts.

Rayalaseema - Chittoor and Kadapa districts.

Tamil Nadu - Cuddalore, Dharampuri, Krishnagiri, Perambalur, Salem, Tiruchirappalli, Tiruvallur and Vellore districts.

Surface runoff/ Inundation may occur at some fully saturated soils & low-lying areas over area of concern as shown in map due to expected rainfall occurrence in next 24 hours.

❖ Significant Rainfall (in cm) recorded during past 24 hours till 0830 hours IST of today, the 16th October is given in Annexure-I

❖ **Impact Expected [Tamil Nadu (including Chennai) and Andhra Pradesh due to heavy rainfall]**

- Localized Flooding of roads, water logging in low lying areas and closure of underpasses mainly in urban areas of the above region.
- Occasional reduction in visibility due to heavy rainfall.
- Disruption of traffic in major cities and roadways due to water logging in roads and poor visibility due to heavy rain leading to increased travel time and incidents
- Likely disruption of marine and inland water transportation like small boats and trawlers.
- Minor damage to kutcha roads.
- Possibilities of damage to vulnerable structure.
- Localized Landslides/Mudslides/landslips/mud slips/land sinks/mud sinks.
- Damage to horticulture and standing crops in some areas due to inundation and wind.
- It may lead to riverine flooding in some river catchments (for riverine flooding please visit Webpage of Central Water Commission)

Contact: Cyclone Warning Division, Office of the Director General of Meteorology, India Meteorological Department, Ministry of Earth Sciences, E-mail: cyclonewarningdivision@gmail.com, Website: rsmcnewdelhi.imd.gov.in, Spatial rainfall distribution: Isolated: <25%, A few: 26-50%, Many: 51-75%, Most: 76-100%, Rainfall amount (mm): Heavy rain: 64.5 – 115.5, Very heavy rain: 115.6 – 204.4, Extremely heavy rain: 204.5 or more.

❖ **Action Suggested [Tamil Nadu and Andhra Pradesh due to heavy rainfall]**

- Fishermen are advised not to venture into
 - Southwest and adjoining westcentral Bay of Bengal till 17th October.
 - Fishermen out at sea are advised to return to coasts.
- Judicious regulation of surface transports including railways and roadways and onshore/offshore activities.
- Check for traffic congestion on your route before leaving for your destination.
- Follow any traffic advisories that are issued in this regard.
- Avoid going to areas that face the water logging problems often.
- Avoid staying in vulnerable structure.

Agromet advisories for Heavy Rainfall

- Provide mechanical support to horticultural crops & staking to vegetables.
- Keep the harvested produce at safer place.

(B) Well Marked Low Pressure area over coastal Oman

Yesterday's **Depression** over central Arabian Sea moved northwestwards and crossed Oman coast near latitude 19.35°N and longitude 57.7°E, close to Duqm (Oman) between 2230 hours IST and 2330 hours IST and lay as a **Well Marked Low Pressure Area** over coastal Oman in the same midnight (2330 hours IST) of the same day, the 15th October, 2024.

*This is the last update with respect to the **Well Marked Low Pressure area over coastal Oman.***

All associated graphics have been kept in Annexure-I.

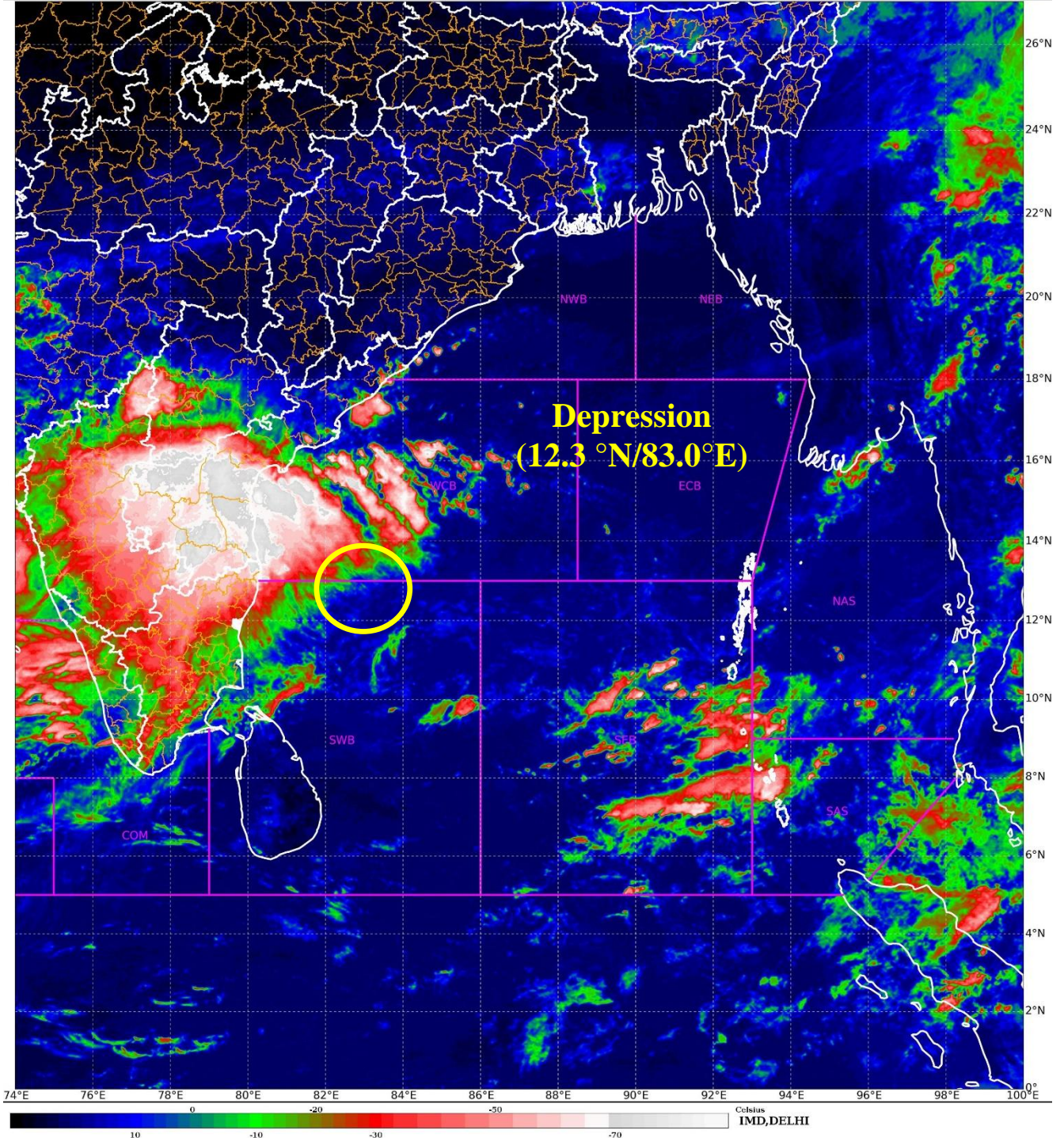
Significant Rainfall recorded during past 24 hours till 0830 hours IST of today 16.10.2024 (in cm) has been kept in Annexure - II

Next Press Release will be issued at 1230 hours IST of tomorrow, the 17th October, 2024.

Contact: Cyclone Warning Division, Office of the Director General of Meteorology, India Meteorological Department, Ministry of Earth Sciences, E-mail: cyclonewarningdivision@gmail.com, Website: rsmcnewdelhi.imd.gov.in, Spatial rainfall distribution: Isolated: <25%, A few: 26-50%, Many: 51-75%, Most: 76-100%, Rainfall amount (mm): Heavy rain: 64.5 – 115.5, Very heavy rain: 115.6 – 204.4, Extremely heavy rain: 204.5 or more.

SAT : INSAT-3DR IMG
IMG_TIR1_TEMP 10.8 um
L1C Mercator

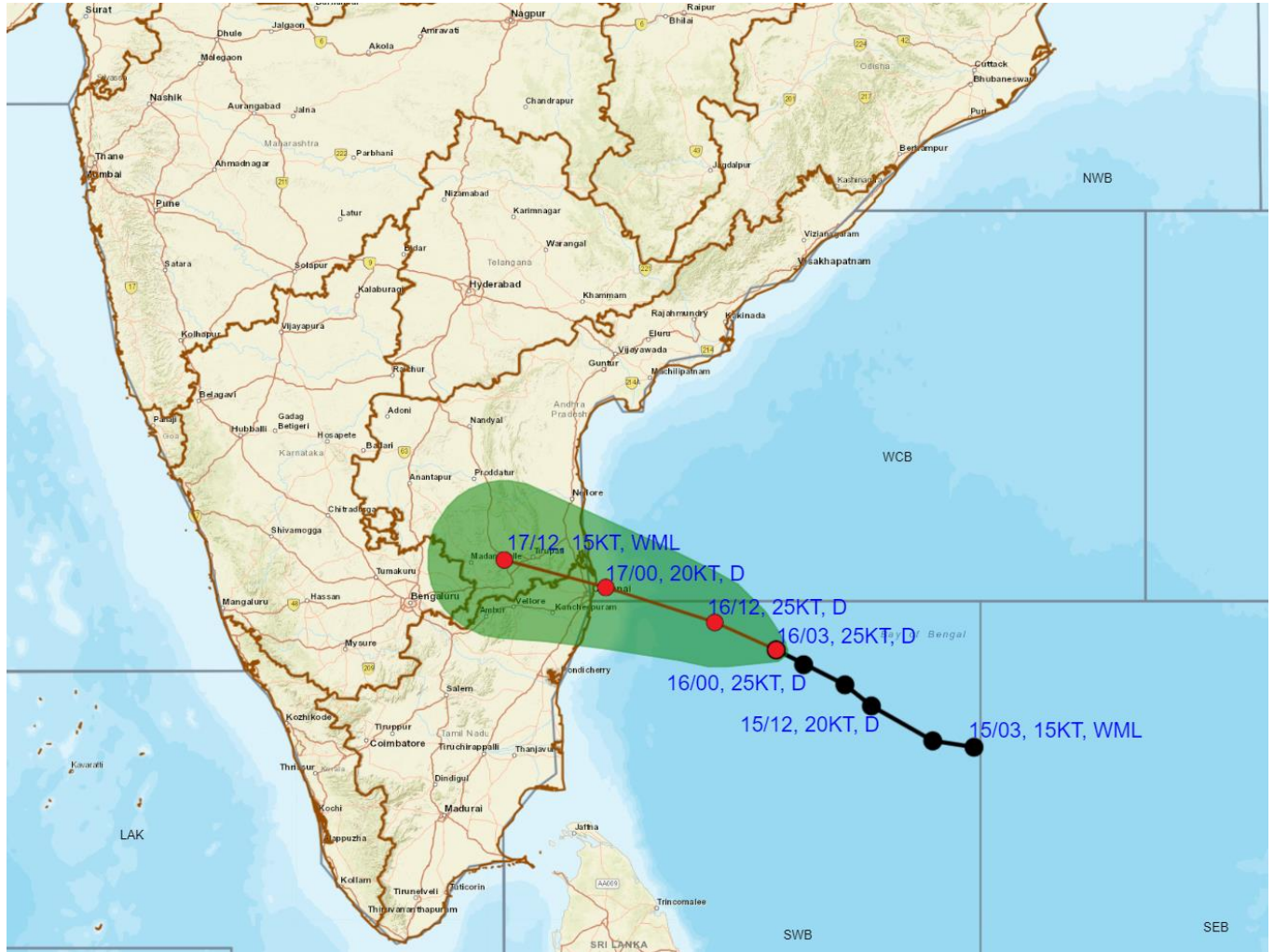
16-10-2024/(0445 to 0512) GMT
16-10-2024/(1015 to 1042) IST



Contact: Cyclone Warning Division, Office of the Director General of Meteorology, India Meteorological Department, Ministry of Earth Sciences, E-mail: cyclonewarningdivision@gmail.com, Website: rsmcnewdelhi.imd.gov.in, Spatial rainfall distribution: Isolated: <25%, A few: 26-50%, Many: 51-75%, Most: 76-100%, Rainfall amount (mm): Heavy rain: 64.5 – 115.5, Very heavy rain: 115.6 – 204.4, Extremely heavy rain: 204.5 or more.



OBSERVED AND FORECAST TRACK ALONGWITH CONE OF UNCERTAINTY (COU) OF DEPRESSION OVER SOUTHWEST AND ADJOINING WESTCENTRAL BAY OF BENGAL BASED ON 0300 UTC (0830 Hrs. IST) OF 16th OCTOBER, 2024



DATE/TIME IN UTC
IST=UTC + 0530

L: LOW PRESSURE AREA

WML: WELL MARKED LOW PRESSURE AREA

D: DEPRESSION (17-27 KT)

DD: DEEP DEPRESSION (28-33 KT)

CS: CYCLONIC STORM (34-47 KT)

SCS: SEVERE CYCLONIC STORM (48-63KT)

VSCS: VERY SEVERE CYCLONIC STORM (64-89 KT)

ESCS: EXTREMELY SEVERE CYCLONIC STORM (90-119 KT)

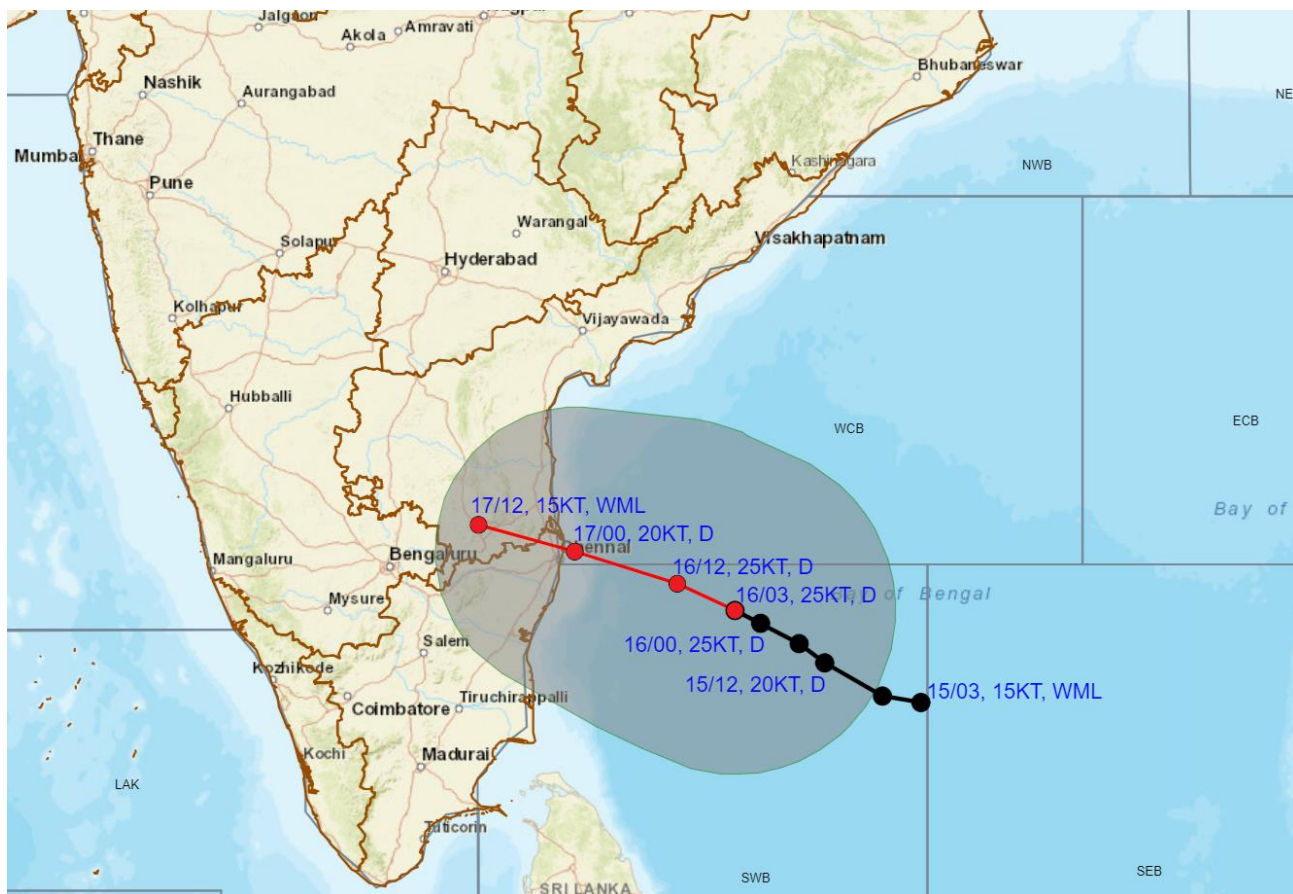
SuCS: SUPER CYCLONIC STORM (≥ 120 KT)

- LESS THAN 34 KT
- 34-47 KT
- ≥ 48 KT
- OBSERVED TRACK
- FORECAST TRACK
- CONE OF UNCERTAINTY

Contact: Cyclone Warning Division, Office of the Director General of Meteorology, India Meteorological Department, Ministry of Earth Sciences, E-mail: cyclonewarningdivision@gmail.com, Website: rsmcnewdelhi.imd.gov.in, Spatial rainfall distribution: Isolated: <25%, A few: 26-50%, Many: 51-75%, Most: 76-100%, Rainfall amount (mm): Heavy rain: 64.5 – 115.5, Very heavy rain: 115.6 – 204.4, Extremely heavy rain: 204.5 or more.



OBSERVED AND FORECAST TRACK ALONGWITH QUADRANT WIND DISTRIBUTION OF DEPRESSION OVER SOUTHWEST AND ADJOINING WESTCENTRAL BAY OF BENGAL BASED ON 0300 UTC (0830 Hrs. IST) OF 16th OCTOBER, 2024



DATE/TIME IN UTC

IST=UTC + 0530

L: LOW PRESSURE AREA

WML: WELL MARKED LOW PRESSURE AREA

D: DEPRESSION (17-27 KT)

DD: DEEP DEPRESSION (28-33 KT)

CS: CYCLONIC STORM (34-47 KT)

SCS: SEVERE CYCLONIC STORM (48-63KT)

● LESS THAN 34 KT

○ 34-47 KT

⦿ ≥ 48 KT

— OBSERVED TRACK

— FORECAST TRACK

▲ CONE OF UNCERTAINTY

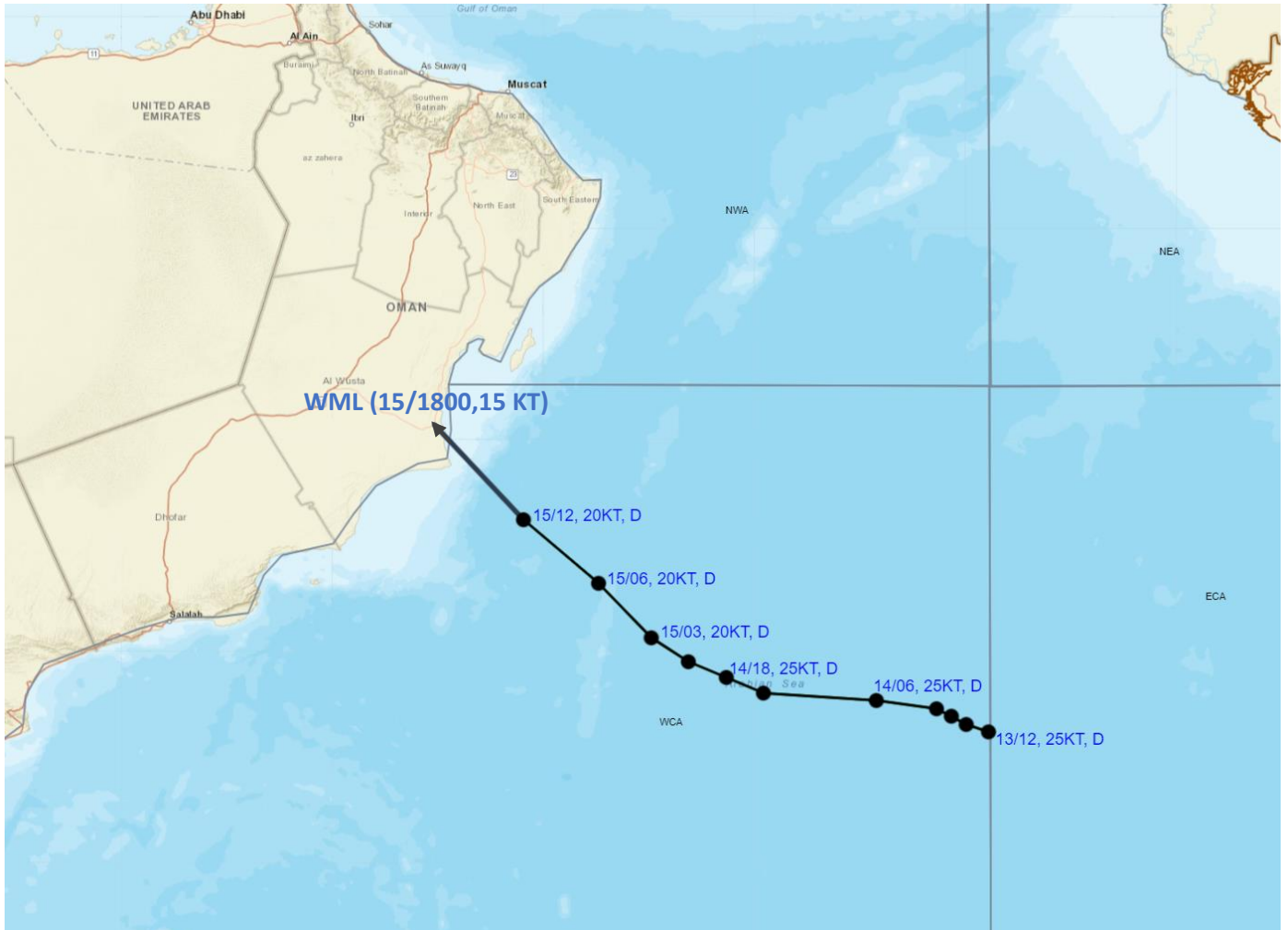
AREA OF MAXIMUM SUSTAINED WIND SPEED:

■ 20-30 KT (35-55 KMPH)

Contact: Cyclone Warning Division, Office of the Director General of Meteorology, India Meteorological Department, Ministry of Earth Sciences, E-mail: cyclonewarningdivision@gmail.com, Website: rsmcnewdelhi.imd.gov.in, Spatial rainfall distribution: Isolated: <25%, A few: 26-50%, Many: 51-75%, Most: 76-100%, Rainfall amount (mm): Heavy rain: 64.5 – 115.5, Very heavy rain: 115.6 – 204.4, Extremely heavy rain: 204.5 or more.



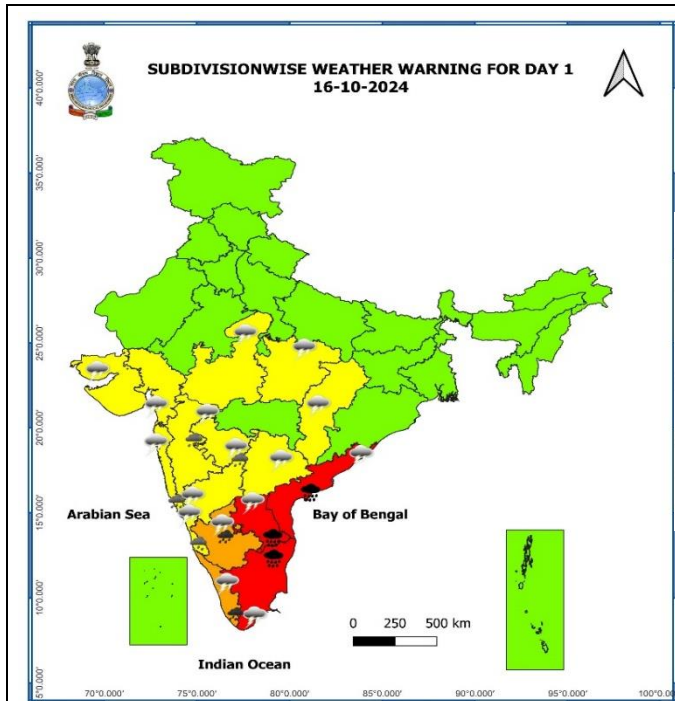
OBSERVED TRACK OF DEPRESSION OVER ARABIAN SEA DURING 13TH TO 15TH OCTOBER, 2024



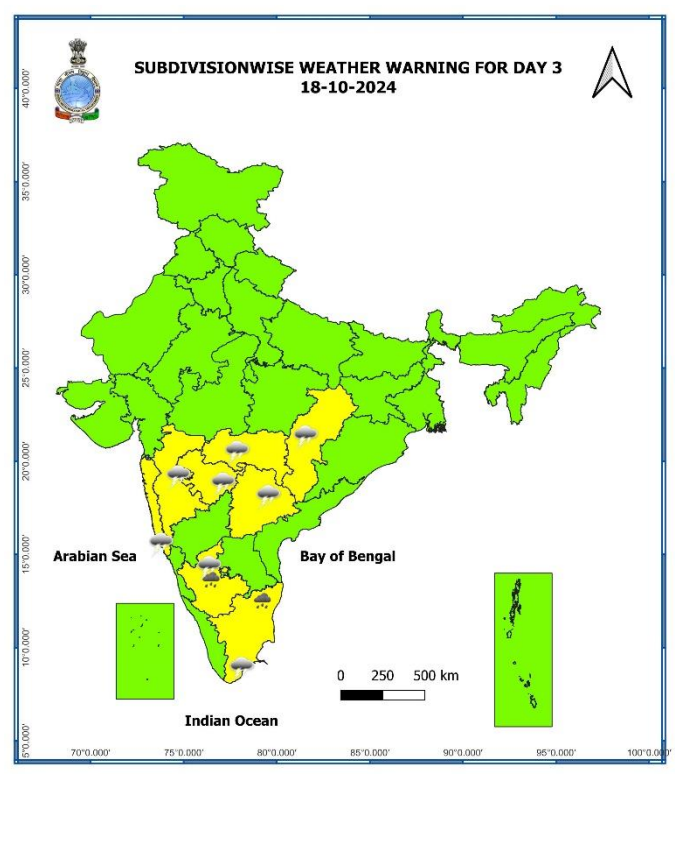
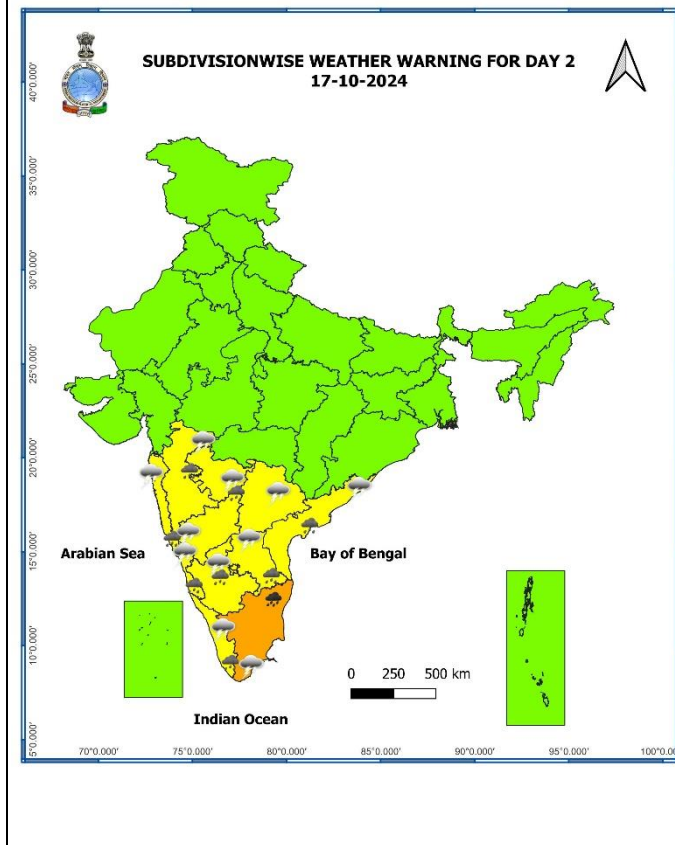
DATE/TIME IN UTC
IST=UTC + 0530
L: LOW PRESSURE AREA
WML: WELL MARKED LOW PRESSURE AREA
D: DEPRESSION (17-27 KT)
DD: DEEP DEPRESSION (28-33 KT)
CS: CYCLONIC STORM (34-47 KT)
SCS: SEVERE CYCLONIC STORM (48-63KT)
VSCS: VERY SEVERE CYCLONIC STORM (64-89 KT)
ESCS: EXTREMELY SEVERE CYCLONIC STORM (90-119 KT)
SuCS: SUPER CYCLONIC STORM (\geq 120 KT)

- LESS THAN 34 KT
- 34-47 KT
- \geq 48 KT
- OBSERVED TRACK
- FORECAST TRACK
- CONE OF UNCERTAINTY

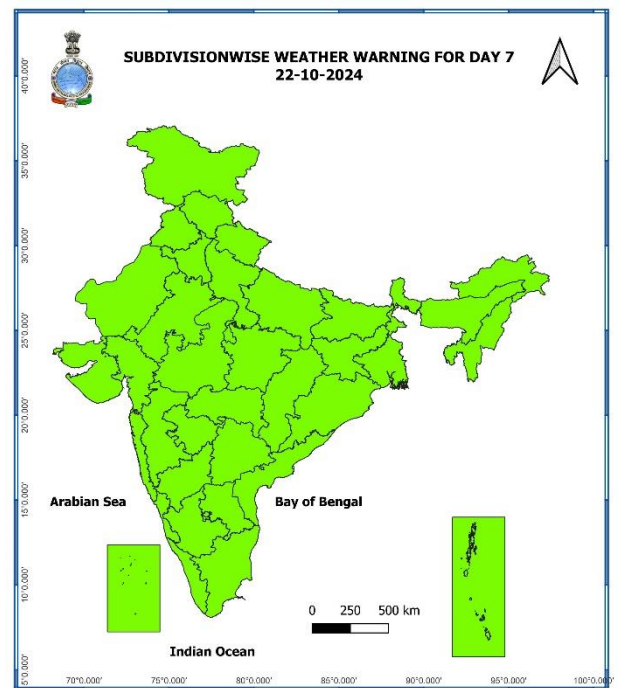
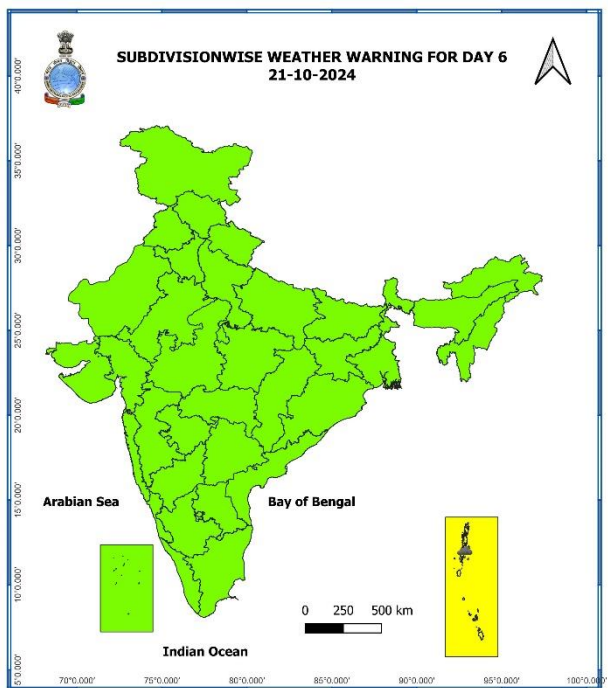
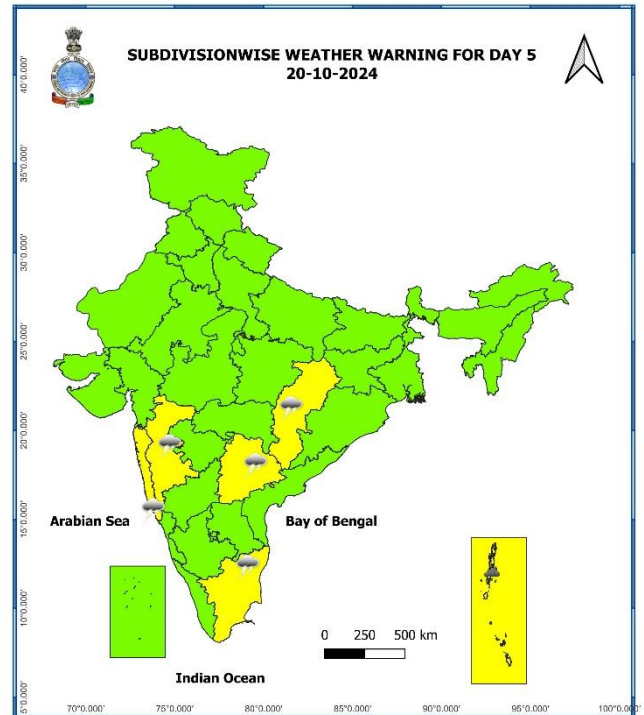
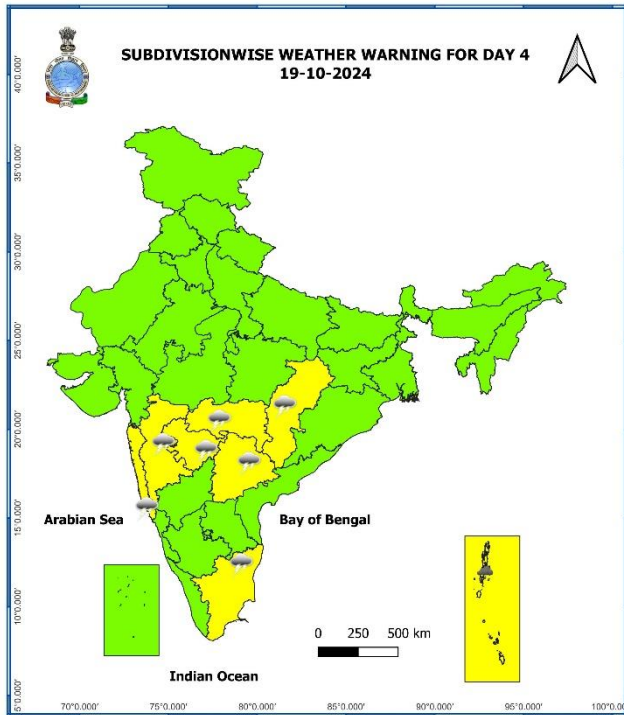
Contact: Cyclone Warning Division, Office of the Director General of Meteorology, India Meteorological Department, Ministry of Earth Sciences, E-mail: cyclonewarningdivision@gmail.com, Website: rsmcnewdelhi.imd.gov.in, Spatial rainfall distribution: Isolated: <25%, A few: 26-50%, Many: 51-75%, Most: 76-100%, Rainfall amount (mm): Heavy rain: 64.5 – 115.5, Very heavy rain: 115.6 – 204.4, Extremely heavy rain: 204.5 or more.



- Fog
- Heavy Rain
- Very Heavy Rain
- Extremely Heavy Rain
- Thunder & Lightning
- Hailstorm
- Dust Raising Winds
- Heavy Snow
- Dust Storm
- Heat Wave
- Warm Night
- Hot Day
- Hot & Humid
- Cold Wave
- Cold Day
- Ground Frost
- Strong Surface Winds



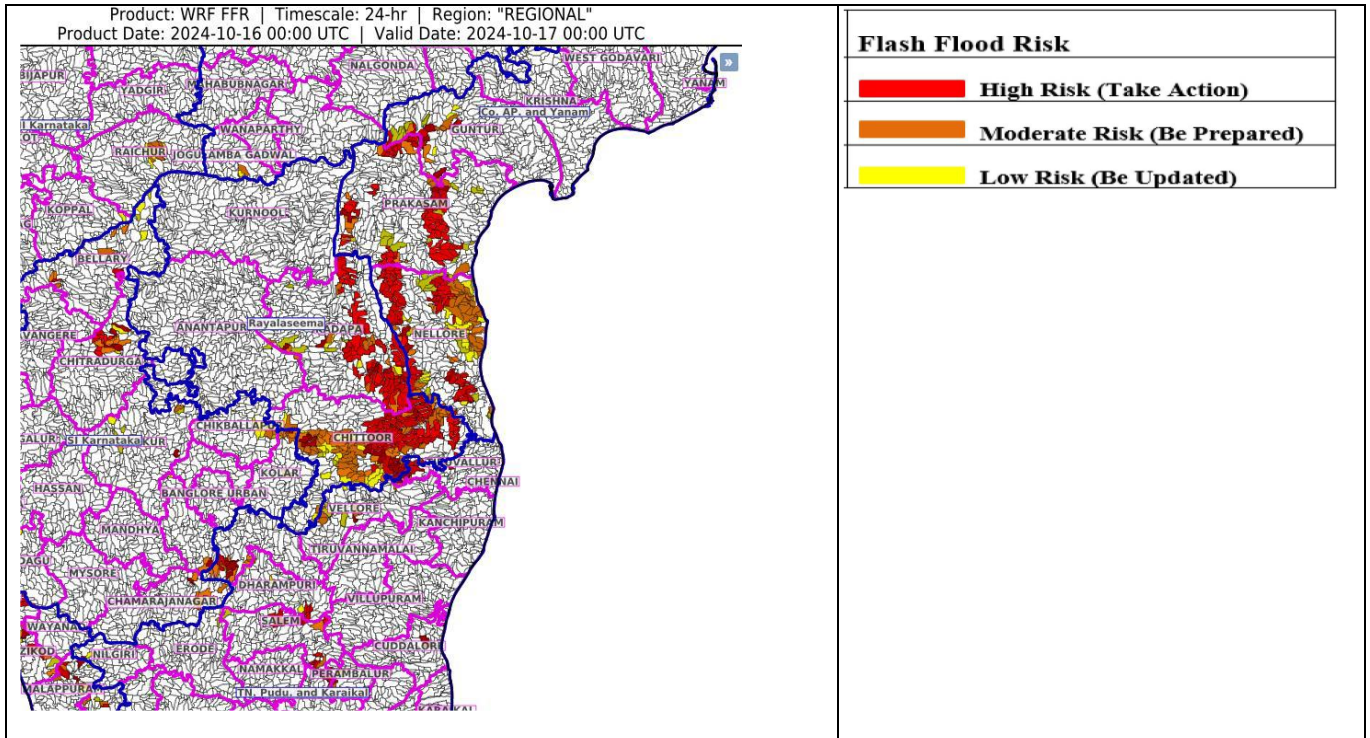
Contact: Cyclone Warning Division, Office of the Director General of Meteorology, India Meteorological Department, Ministry of Earth Sciences, E-mail: cyclonewarningdivision@gmail.com, Website: rsmcnewdelhi.imd.gov.in, Spatial rainfall distribution: Isolated: <25%, A few: 26-50%, Many: 51-75%, Most: 76-100%, Rainfall amount (mm): Heavy rain: 64.5 – 115.5, Very heavy rain: 115.6 – 204.4, Extremely heavy rain: 204.5 or more.



- Action may be taken based on **ORANGE AND RED** COLOUR warnings.
- Vulnerable regions likely urban and hilly areas action may be initiated for heavy rainfall warning.
- As the lead period increases forecast accuracy decreases.

Contact: Cyclone Warning Division, Office of the Director General of Meteorology, India Meteorological Department, Ministry of Earth Sciences, E-mail: cyclonewarningdivision@gmail.com, Website: rsmcnewdelhi.imd.gov.in, Spatial rainfall distribution: Isolated: <25%, A few: 26-50%, Many: 51-75%, Most: 76-100%, Rainfall amount (mm): Heavy rain: 64.5 – 115.5, Very heavy rain: 115.6 – 204.4, Extremely heavy rain: 204.5 or more.

Flash Flood Guidance



24 hours Outlook for the Flash Flood Risk (FFR) till 0530 IST of 17-10-2024:

Moderate flash flood risk likely over few watersheds & neighbourhoods of following Met Sub-divisions during next 24 hours

Coastal Andhra Pradesh & Yanam - Guntur, Prakasam and Nellore districts.

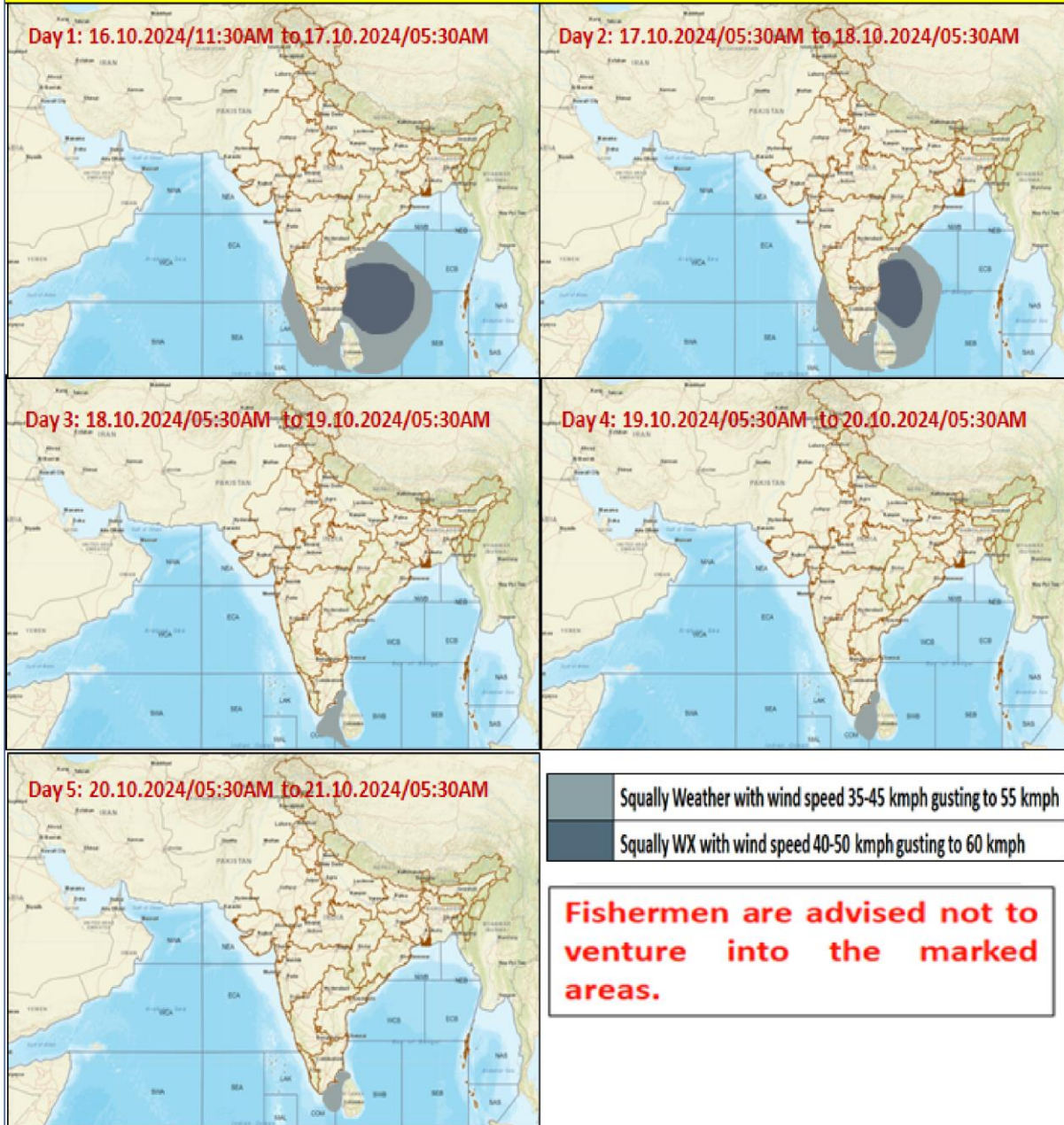
Rayalaseema - Chittoor and Kadapa districts.

Tamil Nadu - Cuddalore, Dharampuri, Krishnagiri, Perambalur, Salem, Tiruchirappalli, Tiruvallur and Vellore districts.

Surface runoff/ Inundation may occur at some fully saturated soils & low-lying areas over area of concern as shown in map due to expected rainfall occurrence in next 24 hours.

Contact: Cyclone Warning Division, Office of the Director General of Meteorology, India Meteorological Department, Ministry of Earth Sciences, E-mail: cyclonewarningdivision@gmail.com, Website: rsmcnewdelhi.imd.gov.in, Spatial rainfall distribution: Isolated: <25%, A few: 26-50%, Many: 51-75%, Most: 76-100%, Rainfall amount (mm): Heavy rain: 64.5 – 115.5, Very heavy rain: 115.6 – 204.4, Extremely heavy rain: 204.5 or more.

Fishermen Warning Graphics



Contact: Cyclone Warning Division, Office of the Director General of Meteorology, India Meteorological Department, Ministry of Earth Sciences, E-mail: cyclonewarningdivision@gmail.com, Website: rsmcnewdelhi.imd.gov.in, Spatial rainfall distribution: Isolated: <25%, A few: 26-50%, Many: 51-75%, Most: 76-100%, Rainfall amount (mm): Heavy rain: 64.5 – 115.5, Very heavy rain: 115.6 – 204.4, Extremely heavy rain: 204.5 or more.

ANNEXURE-II

Significant Rainfall recorded during past 24 hours till 0830 hours IST of today 16.10.2024 (in cm):

❖ **Tamil Nadu, Puducherry & Karaikal:**

Extremely heavy rainfall (> 20 cm): Cholavaram (Tiruvallur) 30, Red Hills (Tiruvallur) 28, Avadi (Tiruvallur) 25, Zone 01 Kathivakkam (Chennai) 23, Zone 02 D15 Manali (Chennai) 21, **Very heavy rainfall (20 cm ≤ and ≥ 12cm):** Zone 06 T.V.K Nagar (Chennai) 19, Zone 06 D65 Kolathur (Chennai), Zone 13 U39 Adyar (Chennai), Puzhal ARG (Tiruvallur), Zone 07 Ambattur (Chennai) 18 each, Zone 01 Thiruvottiyur (Chennai), Perungudi (Chennai), Zone 02 Manali (Chennai), Hindustan_University (Kancheepuram), Ennore AWS (Chennai) 17 each, Perambur (Chennai), Zone 08 Malar Colony (Chennai), Good Will School Villivakkam ARG (Tiruvallur), Zone 03 Puzhal (Chennai), Ayanavaram Taluk Office (Chennai), Anna University ARG (Chennai), Ponneri (Tiruvallur), Thamaraiykkam (Tiruvallur) 16 each, Ambathur (Chennai), Anna University (Chennai), MGR Nagar (Chennai), Sholinganallur (Chennai), Thiru-Vi-Ka Nagar (Chennai), Tondiarpet (Chennai), Zone 05 Royapuram (Chennai), Adayar (Chennai) 15 each, Zone 03 Madhavaram (Chennai), Zone 04 Tondiarpet (Chennai), Chennai(N) AWS (Chennai), Chennai (N) (Chennai), CD Hospital Tondiarpet (Chennai), YMCA Nandnam ARG (Chennai), Kodambakkam (Chennai) 14 each, Zone 08 Anna Nagar (Chennai), Anna Nagar (Chennai), Zone 07 U18 D81 Vanagaram (Chennai), Chennai Collector Office (Chennai), Zone 10 Kodambakkam (Chennai), DGP Office (Chennai), Royapuram (Chennai) 13 each, Zone 09 Ice House (Chennai), NIOT_Pallikaranai ARG (Chennai), Zone 09 Teynampet (Chennai), Teynampet (Chennai), Alandur (Chennai), Chennai (AP) (Chennai), Meenambakkam AWS (Chennai), Zone 11 U32 Maduravoyal (Chennai) 12 each,

Heavy rainfall (11 cm ≤ and ≥ 7cm): Zone 12 Meenambakkam (Chennai), Kolapakkam ARG (Kancheepuram), Zone 11 Valasaravakkam (Chennai), Zone 15 Uthandi (Chennai), Zone 05 GCC (Chennai), Tiruvottiyur (Chennai), Zone Adyar Eco Park (Chennai) 11 each, Zone 12 D156 Mugalivakkam (Chennai), Jaya Engg College AWS (Tiruvallur), Zone 14 Perungudi (Chennai), Zone 15 Sholinganallur (Chennai), Tiruppur IB PWD (Tiruppur) 10 each, Gummidipoondi (Tiruvallur), Zone 14 U41 Perungudi (Chennai), Uthukottai (Tiruvallur), Manimutharu Dam PWD (Kallakurichi), Tiruvallur (Tiruvallur), KCS Mill-2 Kachirayaopalayam (Kallakurichi), Mahabalipuram (Chengalpattu), Satyabama Uty ARG (Kancheepuram), Poonamallee (Tiruvallur), Chembarabakkam (Kancheepuram) 9 each, Zone Adyar (Chennai), ACS Medical College ARG (Kancheepuram), Bhuvanagiri (Cuddalore), VIT_Chennai AWS (Chengalpattu), RSCL-2 Valavanur (Villupuram), Mahabalipuram AWS (Chengalpattu), Koratur (Tiruvallur), RSCL-2 Koliyanur (Villupuram) 8 each, Uthangarai (Krishnagiri), Tiruttani (Tiruvallur), Pallipattu (Tiruvallur), Kundrathur (Kancheepuram), Tambaram (Chengalpattu), Tiruppur South (Tiruppur) 7 each;

❖ **Royalaseema:** Sullurpeta (Tirupati) 22, Tada (Tirupati) 12, Tirupati Aero (Tirupati) 11, Satyavedu (Tirupati) 10, Porumamilla (Ysr District) 9, Srikalahasti (Tirupati) 8, Thottambedu (Tirupati) 8, Venkatagiri (Tirupati) 8, Penagaluru (Annamayya District) 8, Kodur (Ysr District) 8, Nagari (Chittoor) 8, Gudur (Tirupati) 7, Pullampeta (Annamayya District) 7;

❖ **Coastal Andhra Pradesh & Yanam:** Kavali (Nellore) 18, Nellore (Nellore) 13, Kandukur (Nellore) 10, Seetharamapuram (Nellore) 10, Vinjamur (Nellore) 9, Udayagiri (Nellore) 9;

❖ **South Interior Karnataka:** Bengaluru Hal Ap Obsy (Bengaluru Urban) 9, Hesaraghatta (Bengaluru Urban) 7, Bellur (Mandya) 7, Bengaluru City Obsy (Bengaluru Urban) 7;

Contact: Cyclone Warning Division, Office of the Director General of Meteorology, India Meteorological Department, Ministry of Earth Sciences, E-mail: cyclonewarningdivision@gmail.com, Website: rsmcnewdelhi.imd.gov.in, Spatial rainfall distribution: Isolated: <25%, A few: 26-50%, Many: 51-75%, Most: 76-100%, Rainfall amount (mm): Heavy rain: 64.5 – 115.5, Very heavy rain: 115.6 – 204.4, Extremely heavy rain: 204.5 or more.